

SIE UNCONTROLLED COPY
FOR INFORMATION ONLY

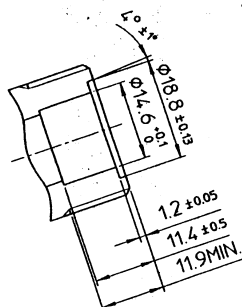
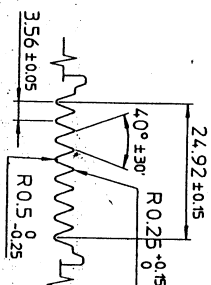
INITIAL

DATE 28/11/02

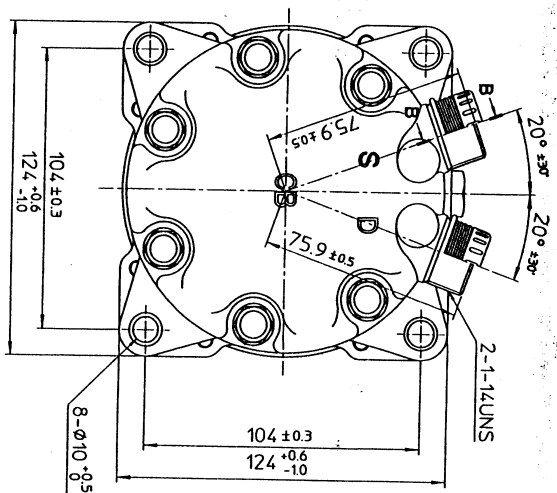
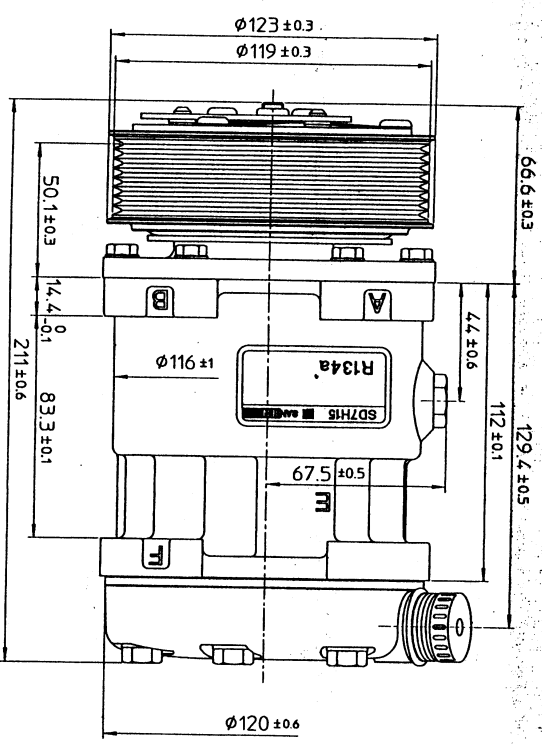
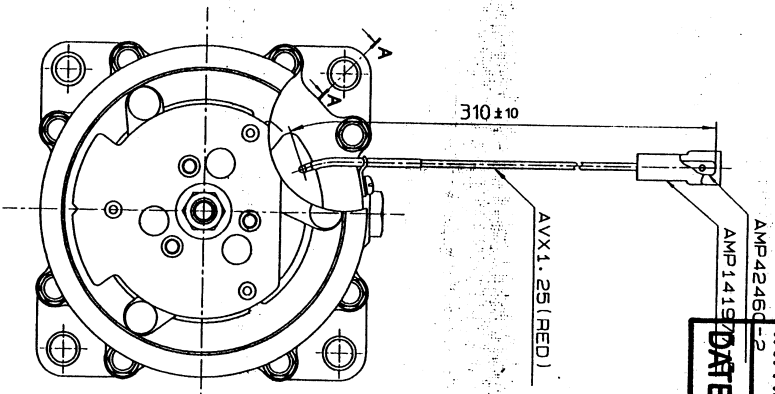
AMP42466-2
 AMP1419
 DATE 28/11/02
 35 REF
 47 REF
 Ø120±0.3

PARTIAL SECT. A-A

DETAIL OF ROTOR GROOVE (2:1)



PARTIAL SECT. B-B (2:1)



COMPRESSOR SPECIFICATIONS

BORE	Ø 29.3	mm (1.15 in)
STROKE	32.8	mm (1.29 in)
DISPLACEMENT PER REVOLUTION	154.9	cc/rev (9.5 cu.in/rev)
NUMBER OF CYLINDERS	7	
HASHIM ALLOWABLE L.R.M.	7000	r.p.m.
HASHIM ALLOWABLE CONTINUOUS L.R.M.	6000	r.p.m.
REFRIGERANT	R-134a	
OL (PAG)	135	cc (4.6 fl.oz)
WEIGHT		kg (l. lb)

CLUTCH SPECIFICATIONS

RATED VOLTAGE	DC 12 V	
BREAKAWAY TORQUE	3.5	kg-m (25.3 ft.-lb)
MINIMUM ENGAGEMENT VOLTAGE	7.5	V MAX
POWER CONSUMPTION	49	W (CU)
HASHIM ALLOWABLE L.R.M.	7000	r.p.m.
HASHIM ALLOWABLE CONTINUOUS L.R.M.	6000	r.p.m.
REFRIGERANT	R-134a	
BELT TYPE	PV	TYPE
PULLEY DIAMETER	Ø 119	mm (4.7 in)
WEIGHT		kg (l. lb)

RECEIVED BY:
 DATE: 28.11.02
 I will be
 29.11.02

NO	REV	REVISION RECORD	BY	DATE
1	1			
2	1			
3	1			
4	1			

COMPRESSOR
 SD7H15CB7850
 7850 - 6000
 SANDEN CORPORATION