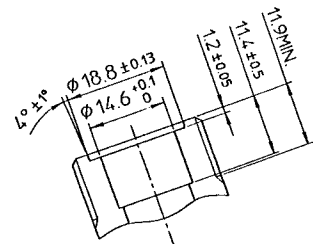
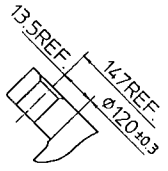


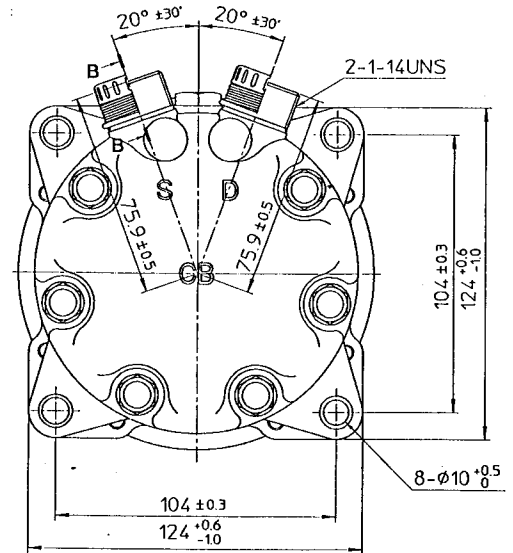
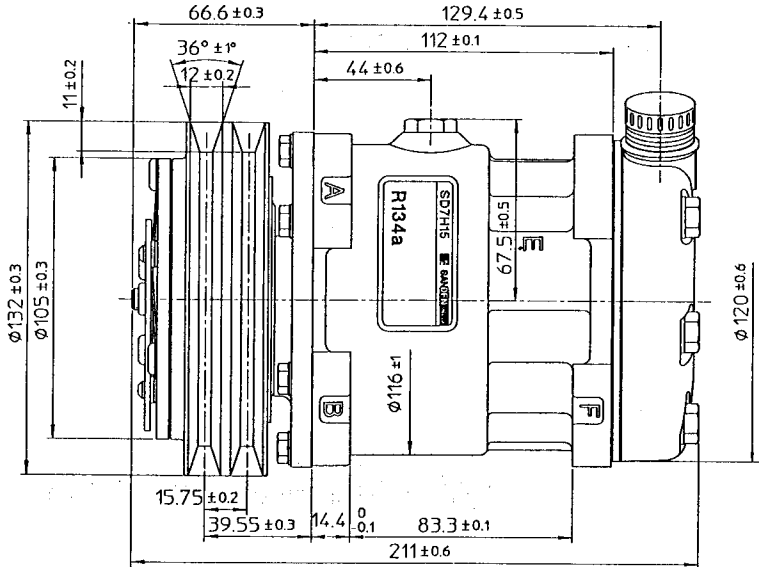
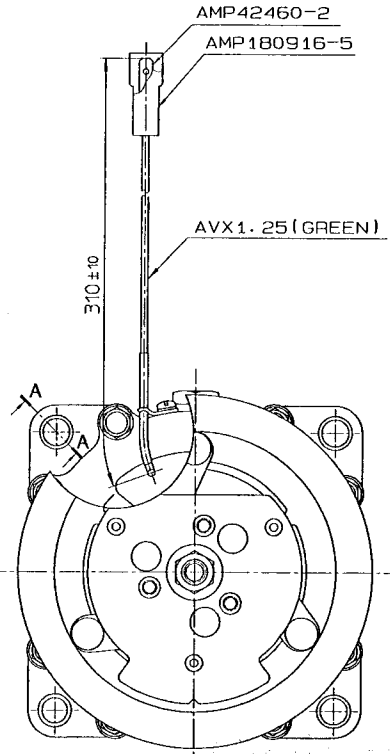
**SIE UNCONTROLLED COPY**  
**FOR INFORMATION ONLY**  
**INITIAL DC**  
**DATE 19/5/03**



PARTIAL SECT. B-B (2:1)



PARTIAL SECT. A-A



**COMPRESSOR SPECIFICATIONS**

BORE	∅ 29.3 mm ( 1.15 in.)
STROKE	32.8 mm ( 1.29 in.)
DISPLACEMENT PER REVOLUTION	154.9 cc/rev ( 9.5 cuin./rev.)
NUMBER OF CYLINDERS	7
MAXIMUM ALLOWABLE r.p.m.	7000 r.p.m.
MAXIMUM ALLOWABLE CONTINUOUS r.p.m.	6000 r.p.m.
REFRIGERANT	R-134a
OIL (SP-20)	135 cc ( 4.6 fl.oz.)
WEIGHT	kg ( lb)

**CLUTCH SPECIFICATIONS**

RATED VOLTAGE	DC 24 V
BREAKAWAY TORQUE	3.5 kg-m ( 25.3 ft.-lb)
MINIMUM ENGAGEMENT VOLTAGE	16 V MAX.
POWER CONSUMPTION	42 W (CU)
MAXIMUM ALLOWABLE r.p.m.	7000 r.p.m.
MAXIMUM ALLOWABLE CONTINUOUS r.p.m.	6000 r.p.m.
BELT TYPE	A TYPE
PULLEY DIAMETER	∅ 132 mm ( 5.2 in.)
WEIGHT	kg ( lb)

*Handwritten signature and date:*  
 Smithell  
 30.1.09

MATERIAL	PART NO. <b>7872</b>	NAME <b>COMPRESSOR</b>
THIRD ANGLE PROJECTION	SCALE <b>1:1</b>	
DESIGN BY <i>R. Beale</i>	DATE <b>11 DEC 1992</b>	MODEL <b>SD7H15CB7872</b>
CHECKED BY <i>R. Chyral</i>	DATE <b>11 DEC 1992</b>	DRAWING NO. <b>7872-6000</b>
CHECKED BY <i>J. Jankogoch</i>	DATE <b>11 DEC 1992</b>	
NO.	REVISION RECORD	BY DATE