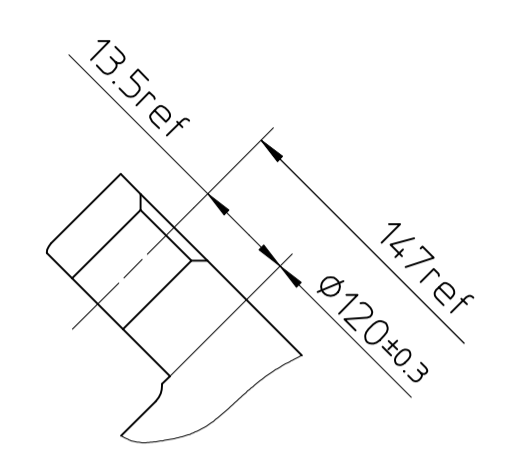
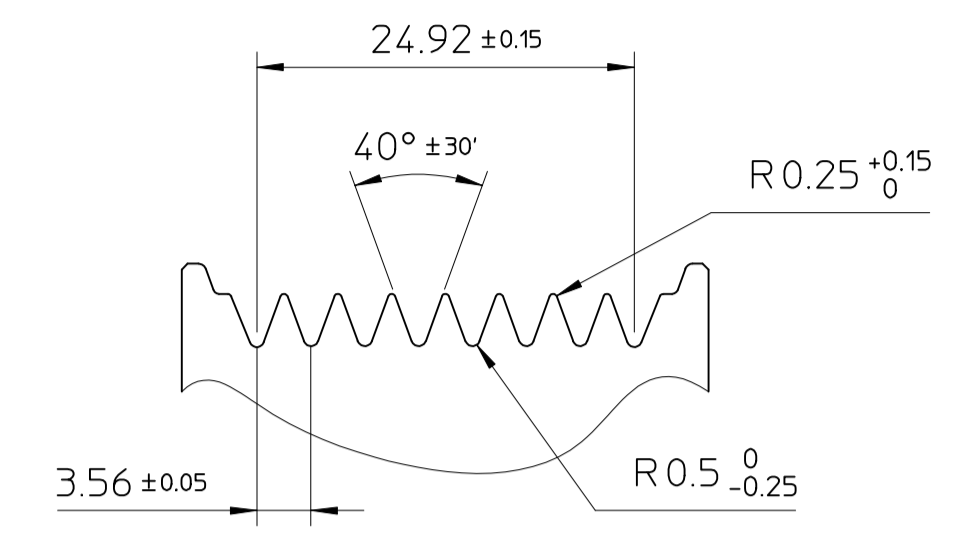


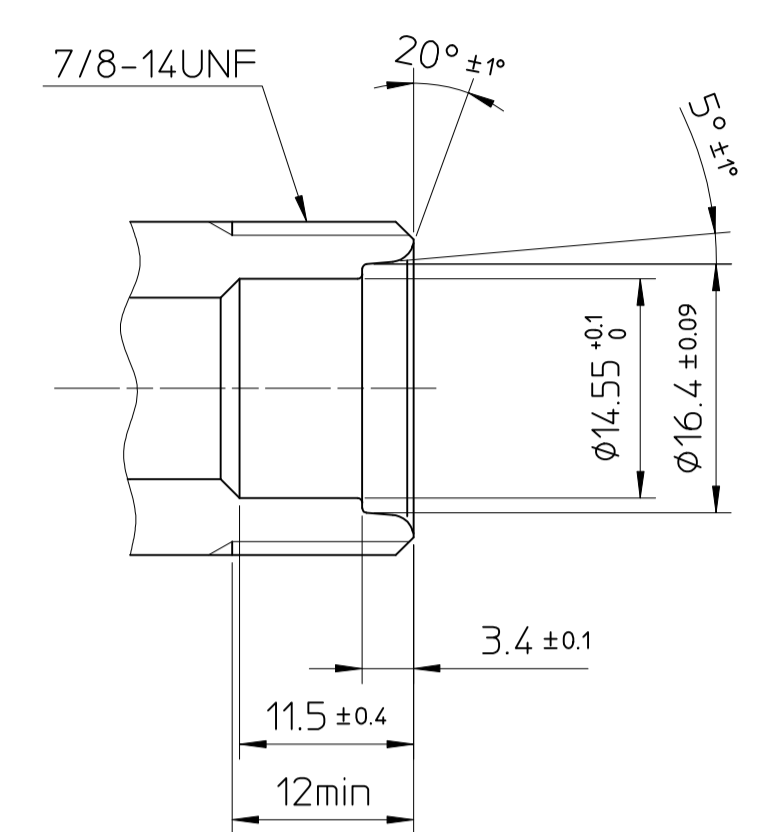
PARTIAL SECT. A-A



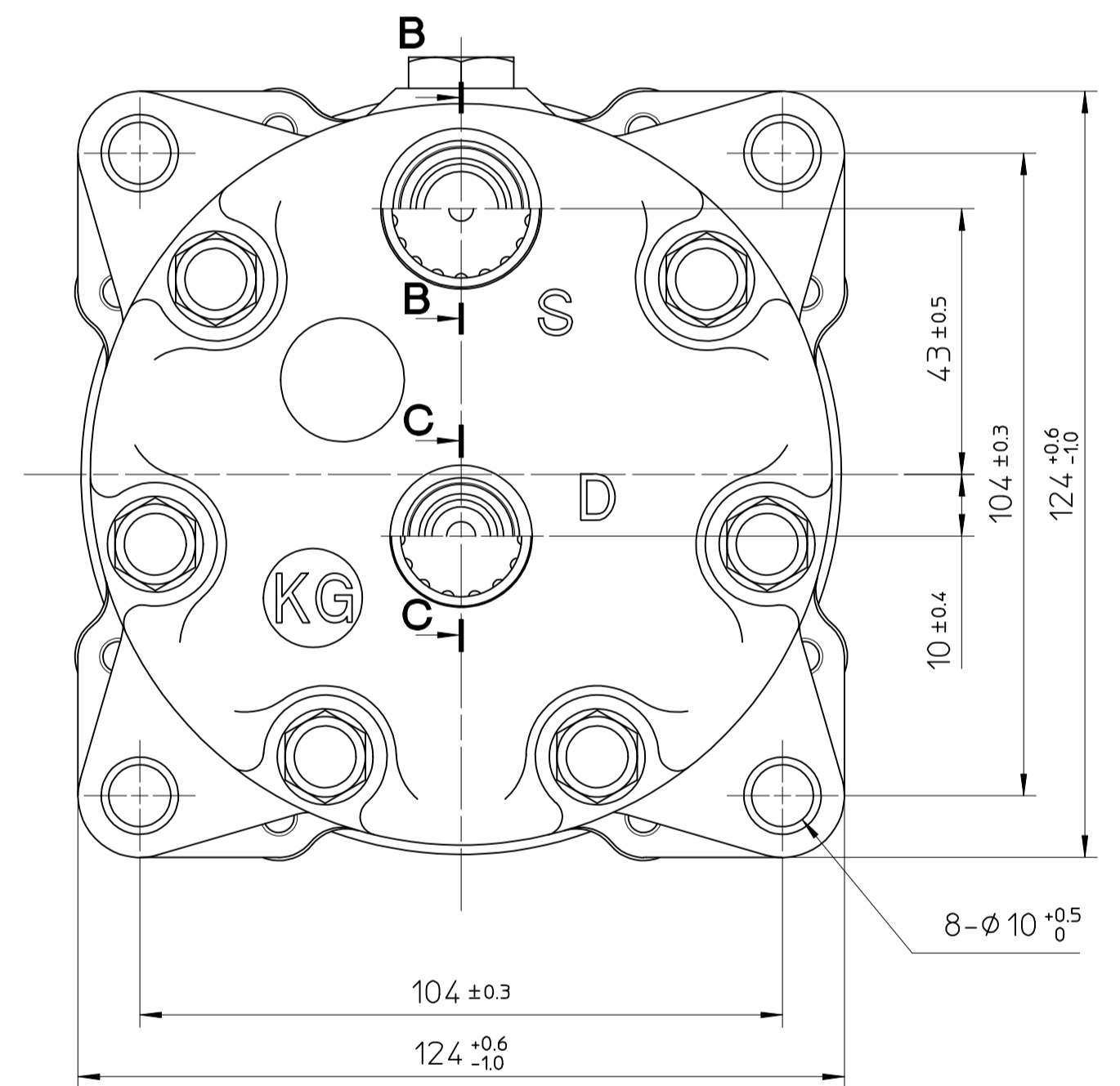
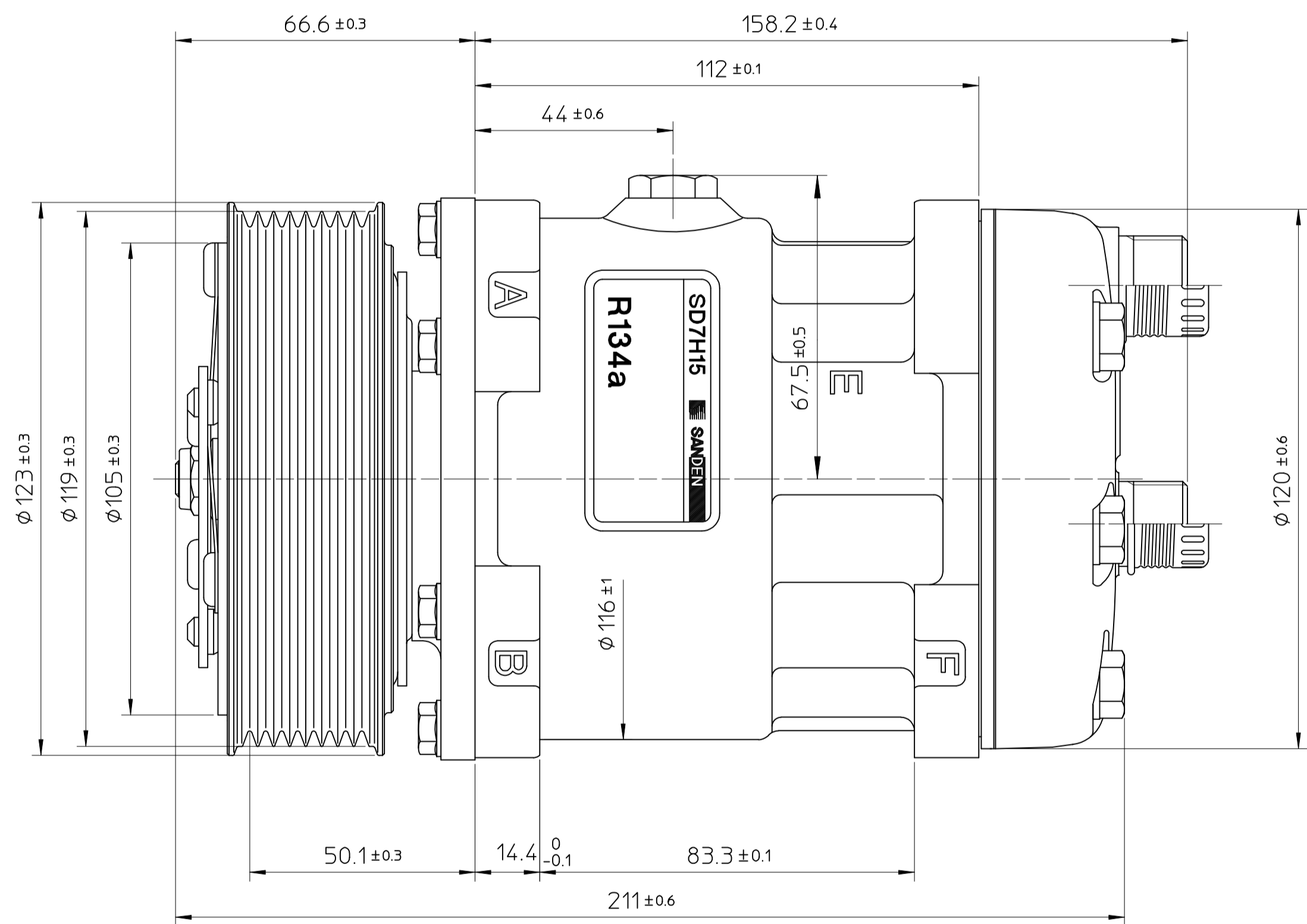
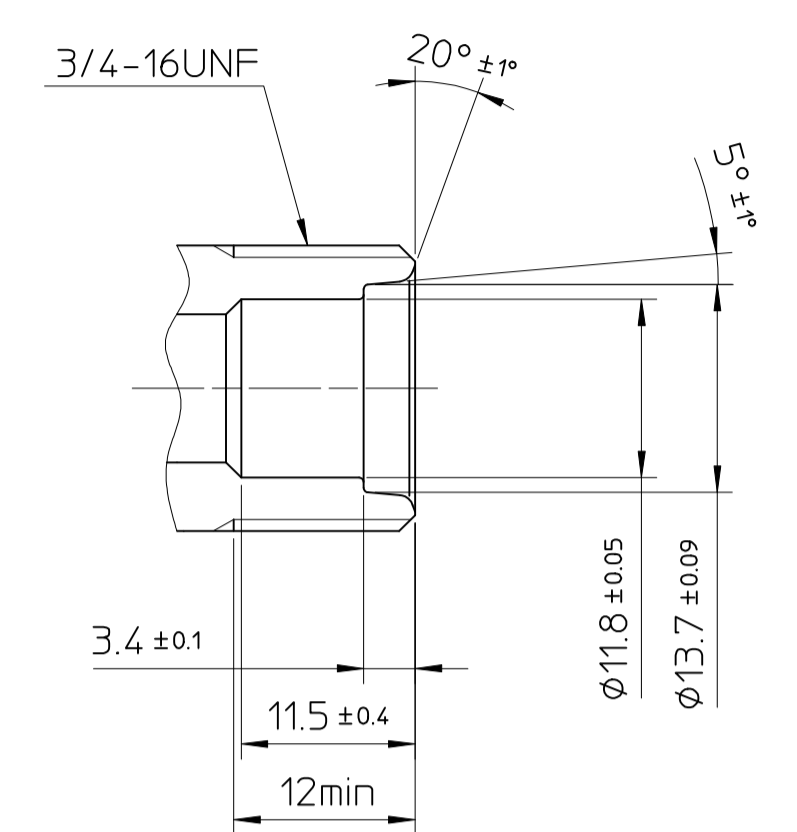
DETAIL OF ROTOR GROOVE (2:1)



PARTIAL SECT. B-B (2:1)



PARTIAL SECT. C-C (2:1)



COMPRESSOR SPECIFICATIONS

BORE	φ29.3	mm
STROKE	32.8	mm
NUMBER OF CYLINDERS	7	
DISPLACEMENT PER REVOLUTION	154.9	cc/rev.
MAXIMUM ALLOWABLE CONTINUOUS SPEED	6000	r.p.m.
MAXIMUM DOWNSHIFT SPEED	7000	r.p.m.
REFRIGERANT	R-134a	
OIL	SP-10 OR EQUIV.	
OIL CHARGE	135	cc
ROTATION	CLOCKWISE	
WEIGHT		kg

CLUTCH SPECIFICATIONS

RATED VOLTAGE	DC 24	V
MINIMUM BREAKAWAY TORQUE	3.5	kg · m
MINIMUM ENGAGEMENT VOLTAGE	16	V
MAXIMUM POWER CONSUMPTION	42	W
MAXIMUM ALLOWABLE CONTINUOUS SPEED	6000	r.p.m.
MAXIMUM DOWNSHIFT SPEED	7000	r.p.m.
BELT TYPE	PV	TYPE
PULLEY DIAMETER	φ119	mm
WEIGHT		kg

8085

UNCONTROLLED COPY

NO.	REVISION RECORD	BY	DATE	MATERIAL	PART NO.	NAME	COMPRESSOR
				THIRD ANGLE PROJECTION	SCALE 1:1		
				DESIGNED BY Y.Aoyama	DATE 12_Mar_1999	MODEL	SD7H15KG8085
				CHECKED BY Y.Uchiyama	DATE 12_Mar_1999	DRAWING NO.	8085 - 6000
			APPROVED BY H.Chiyoda	DATE 12_Mar_1999			