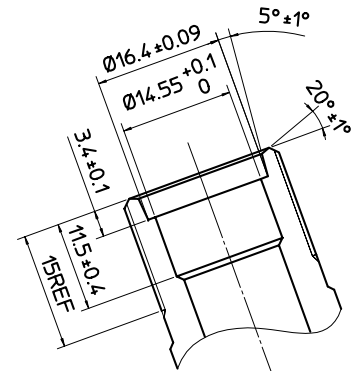
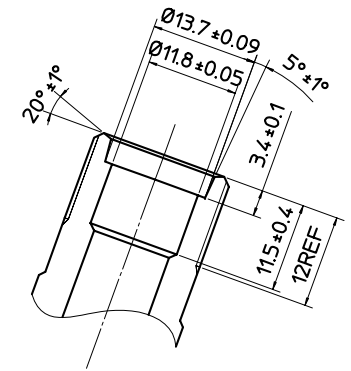


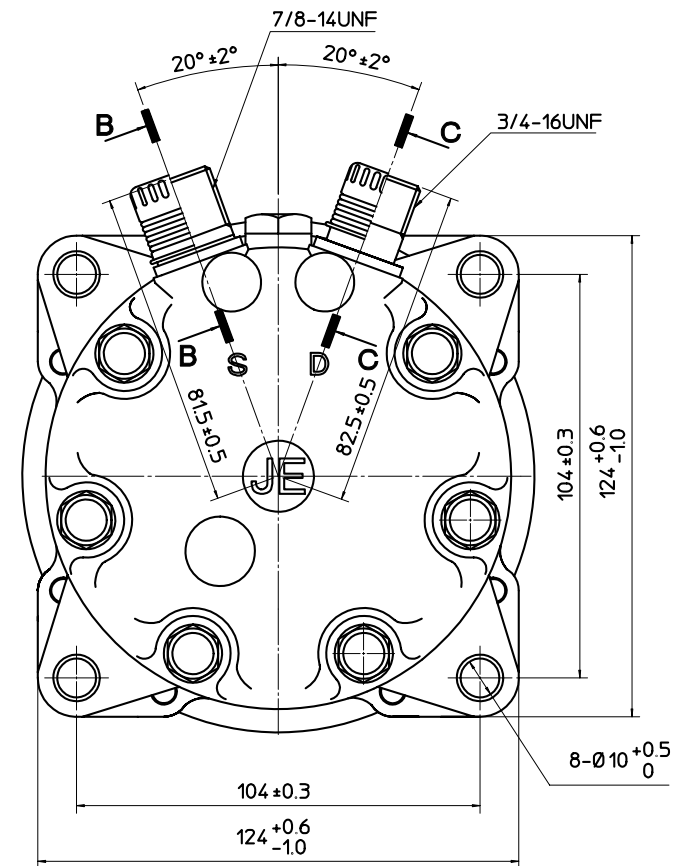
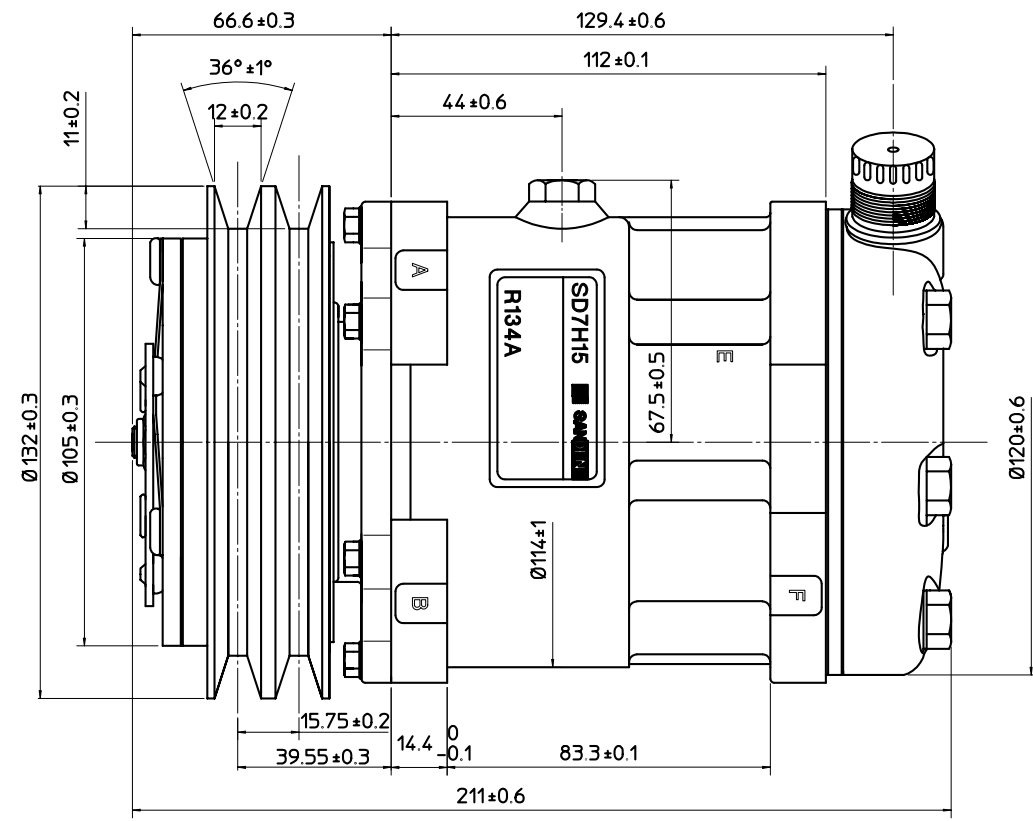
PARTIAL SECT A-A



PARTIAL SECT B-B (2:1)



PARTIAL SECT C-C (2:1)



COMPRESSOR SPECIFICATIONS

BORE	Ø29.3 mm
STROKE	32.8 mm
DISPLACEMENT PER REVOLUTION	154.9 cc/rev
NUMBER OF CYLINDERS	7
MAXIMUM ALLOWABLE r.p.m.	7000 r.p.m.
MAXIMUM ALLOWABLE CONTINUOUS r.p.m.	6000 r.p.m.
REFRIGERANT	HFC134a
OIL(SP-10 OR EQUIV.)	135 cc
ROTATION(CLUTCH SIDE VIEW)	CLOCKWISE
WEIGHT	kg

CLUTCH SPECIFICATIONS

RATED VOLTAGE	DC 12 V
BREAKAWAY TORQUE	3.5 kg-m Δ
MINIMUM ENGAGEMENT VOLTAGE	7.5 V max
POWER CONSUMPTION	43 W (Cu)
MAXIMUM ALLOWABLE r.p.m.	7000 r.p.m.
MAXIMUM ALLOWABLE CONTINUOUS r.p.m.	6000 r.p.m.
BELT TYPE	A
PULLEY DIAMETER	Ø132 mm
WEIGHT	kg



MATERIAL		PART NO. 8220		NAME COMPRESSOR	
THIRD ANGLE PROJECTION		SCALE 1:1		MODEL SD7H15JE8220	
DESIGN BY	CHECKED BY	APPROVED BY	DATE	DRAWING NO. 8220-6000S Δ	
32--35	RAY	20.05.2005	20.05.2005		
REVISION RECORD		BY	DATE		