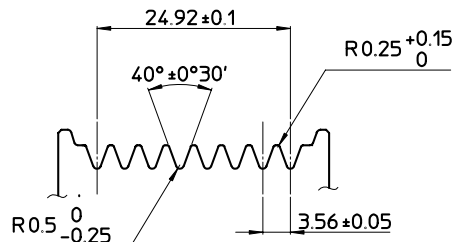
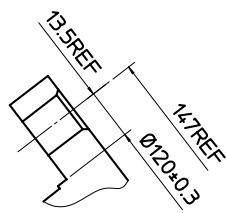
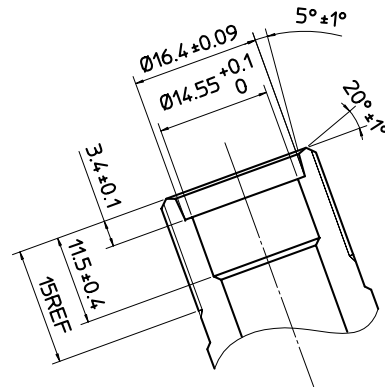


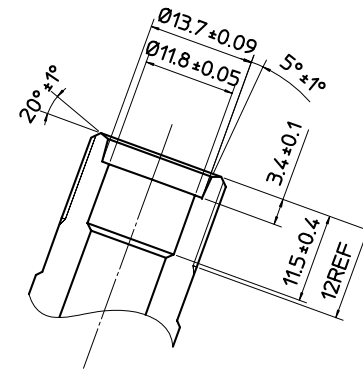
PARTIAL SECT A-A



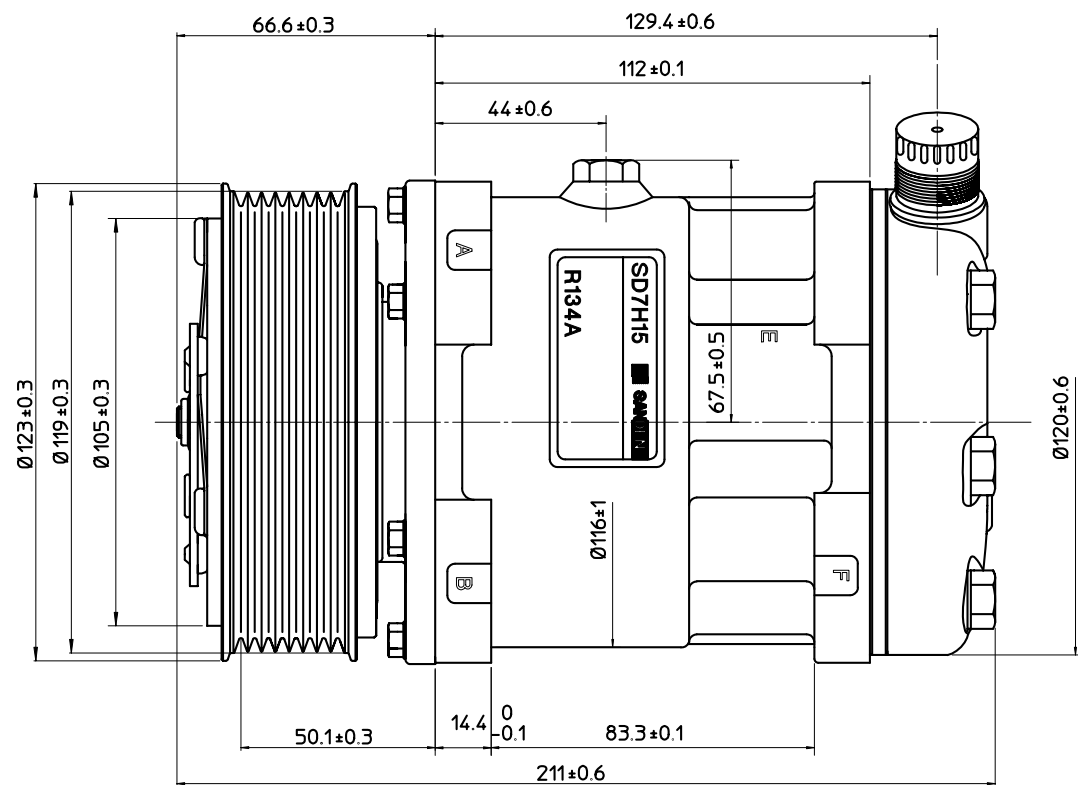
DETAIL OF ROTOR GROOVE(2:1)



PARTIAL SECT B-B (2:1)



PARTIAL SECT C-C (2:1)

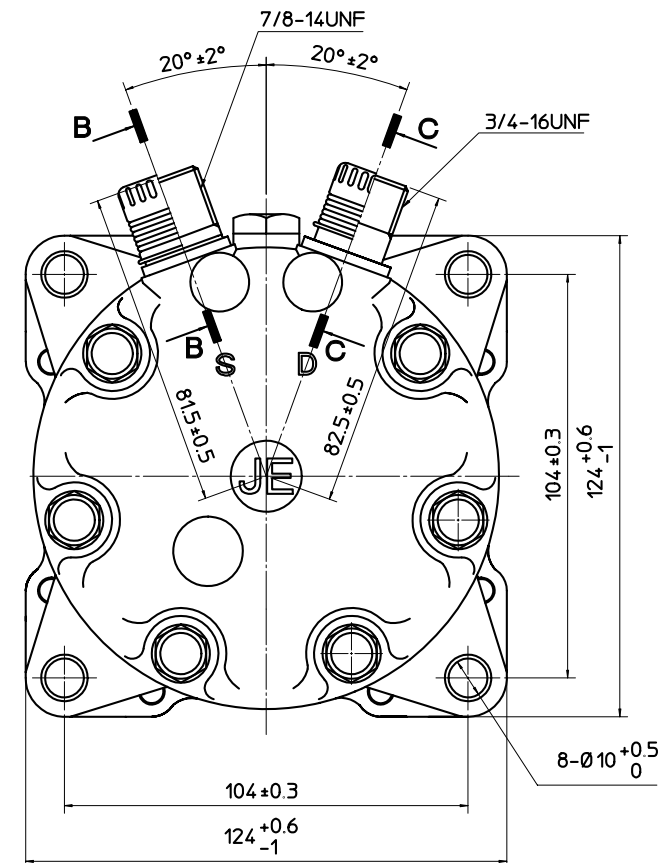


COMPRESSOR SPECIFICATIONS

BORE	Ø29.3 mm
STROKE	32.8 mm
DISPLACEMENT PER REVOLUTION	154.9 cc/rev
NUMBER OF CYLINDERS	7
MAXIMUM ALLOWABLE r.p.m.	7000 r.p.m.
MAXIMUM ALLOWABLE CONTINUOUS r.p.m.	6000 r.p.m.
REFRIGERANT	HFC134a
OIL(SP-10 OR EQUIV.)	135 cc
ROTATION(CLUTCH SIDE VIEW)	CLOCKWISE
WEIGHT	kg

CLUTCH SPECIFICATIONS

RATED VOLTAGE	DC 12 V
BREAKAWAY TORQUE	3.5 kg-m
MINIMUM ENGAGEMENT VOLTAGE	7.5 V max
POWER CONSUMPTION	43 W (Cu)
MAXIMUM ALLOWABLE r.p.m.	7000 r.p.m.
MAXIMUM ALLOWABLE CONTINUOUS r.p.m.	6000 r.p.m.
BELT TYPE	PV
PULLEY DIAMETER	Ø119 mm
WEIGHT	kg



MATERIAL	PART NO. 8230	NAME COMPRESSOR
THIRD ANGLE PROJECTION	SCALE 1:1	MODEL SD7H15JE8230
DESIGN BY 邹顺发 20.05.2005 Raymond	CHECKED BY 高橋正 20.05.2005 Masa.T.	APPROVED BY 高橋正 20.05.2005 Masa.T.
REVISION RECORD		DRAWING NO. 8230-6000S